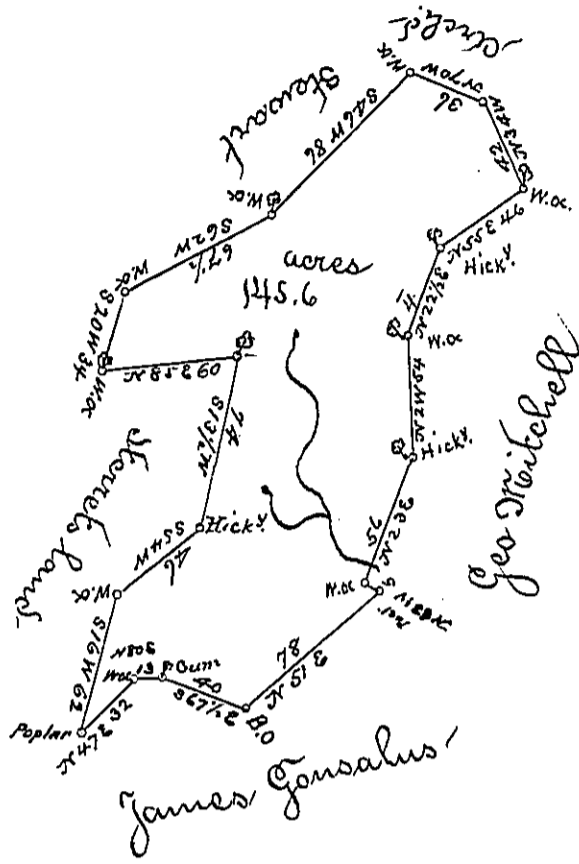


Courses & Distances

- S 20 W 34
- N 85 E 60
- S 13 1/2 W 74
- S 54 W 46
- S 16 W 62
- N 47 E 32
- N 80 E 13
- S 67 1/2 E 40
- N 51 E 78
- N 63 W 5
- N 23 E 56
- N 2 W 54
- N 22 1/2 E 40
- N 55 E 46
- N 34 W 42
- N 70 W 36
- S 46 W 86
- S 62 W 67 1/2



The Draught of a tract of land called — situate in Wayne township, Cumberland County containing one hundred & forty five acres & an half & the usual allowance of six per cent. for roads &c. Surveyed for Alexander Stewart June the 29th 1785 in pursuance of a warrant from the Honorable the Vice President of the Supreme Executive Council Dated the 23^d Day of Feb^r 1785

John Lukens Esq^r Sur^r Gen^l

Jas S. Harris D. D.

IN TESTIMONY that the above is a copy of the original remaining on file in the Department of Internal Affairs of Pennsylvania, made conformably to an Act of Assembly approved the 16th day of February, 1833. I have hereunto set my Hand and caused the Seal of said Department to be affixed at Harrisburg, this twenty-ninth day of August 1895—

James Fatta
Secretary of Internal Affairs.